

SOUTH BAY TRANSLOAD CENTER

500/550 South Alameda Street • Compton

FOR LEASE

Another Project By:



Estimated Completion March 2026



Extensive Improvements Underway!

Features

- Ideal for 3 PL's, Drayage Operators, LTL Carriers and Transloaders
- 74 Door Enclosed Crossdock/Whse (20' Clear Ht.)
- +/- 30,886 Square Feet on Approx. 11.2 Acres
- Edge of Dock Plates at Each Dock Position
- Fenced, Paved and Lit Yard
- Immediate Access to the 91 Freeway
- +/- 15 Minutes to the Ports of Long Beach/LA
- +/- 173-53' Trailer Stalls (Expandable for Shorter Equipment)
- +/- 5,400 Square Foot Two-Story Office Area
- 52 Car Parking Stalls
- 1200 Amps, 480/277 Volts, 3 Phase, 4 Wire
- Up to 13 EV Charging Stations

For more information, please contact:

NEWMARK



Steve Sprenger

Vice Chairman

714.264-3993

steve.sprenger@nmrk.com

CA License #01202806

Rusty Smith

Vice Chairman

562.852.9599

rusty.smith@cushwake.com

CA License #01762370

Kelly Johnson

Director

310.347.8979

kelly.johnson@cushwake.com

CA License #01242823



SOUTH BAY TRANSLOAD CENTER

500/550 South Alameda Street • Compton

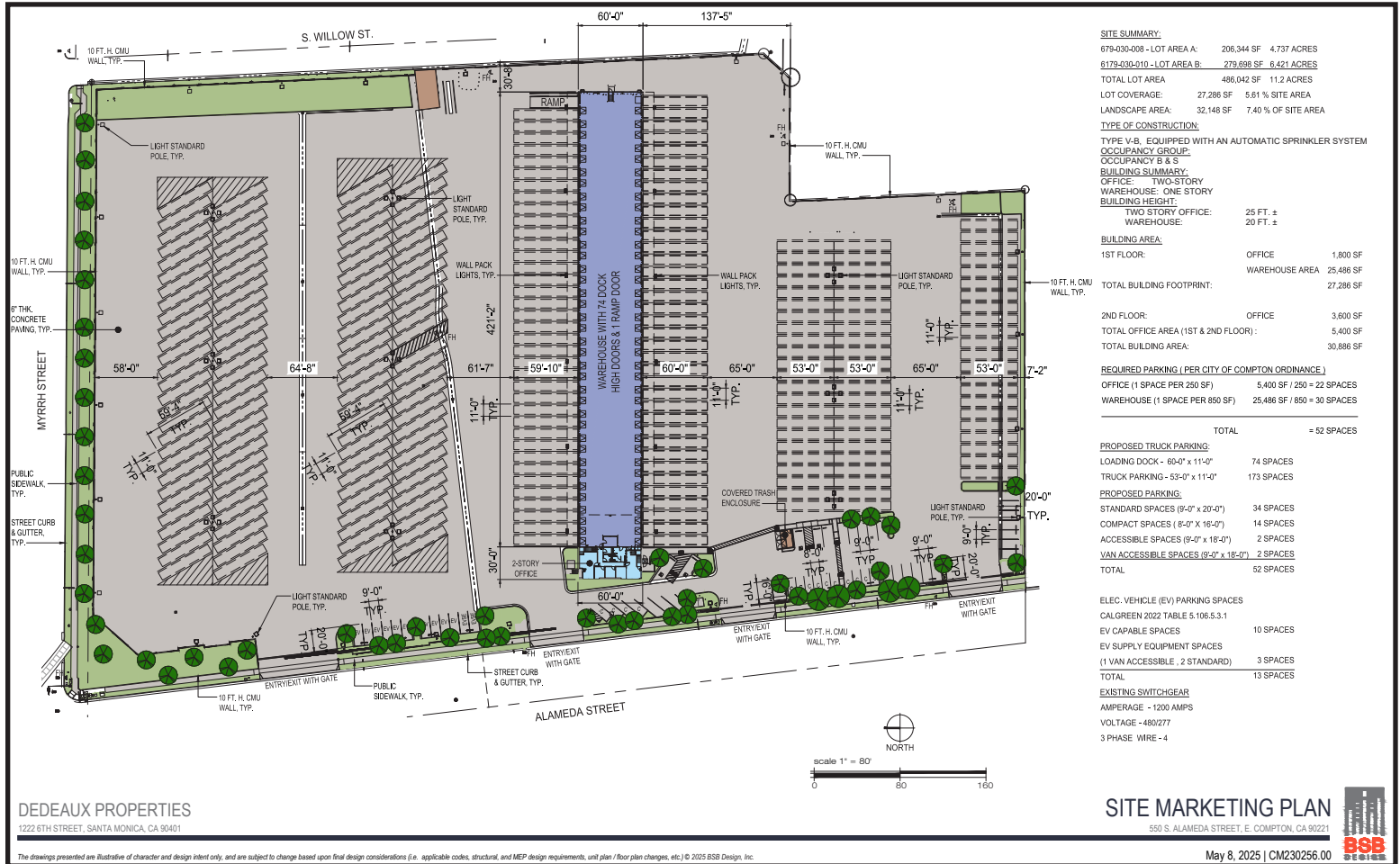
FOR LEASE

Another Project By:



DEDEAUX
PROPERTIES

Site Plan



For more information, please contact:

Steve Sprenger

Vice Chairman

714.264.3993

steve.sprenger@nrmk.com

CA License #01202806

NEWMARK

Rusty Smith

Vice Chairman

562.852.9599

rusty.smith@cushwake.com

CA License #01762370



CUSHMAN & WAKEFIELD

Kelly Johnson

Director

310.347.8979

kelly.johnson@cushwake.com

CA License #01242823

The information contained herein was obtained from sources believed reliable; however, NEWMARK/Cushman & Wakefield makes no guarantees, warranties, or representations as to the completeness or accuracy thereof. The presentation of this property is submitted subject to errors, omissions, change of price or conditions prior to sale or lease, or withdrawal without notice.

NEWMARK 18401 Von Karman Avenue, Suite 150, Irvine, California 92612 • Tel: 949.608.2000 • Corporate RE#01355491
Cushman & Wakefield 3760 Kilroy Airport Way, Suite 690, Long Beach, CA 90806

SOUTH BAY TRANSLOAD CENTER

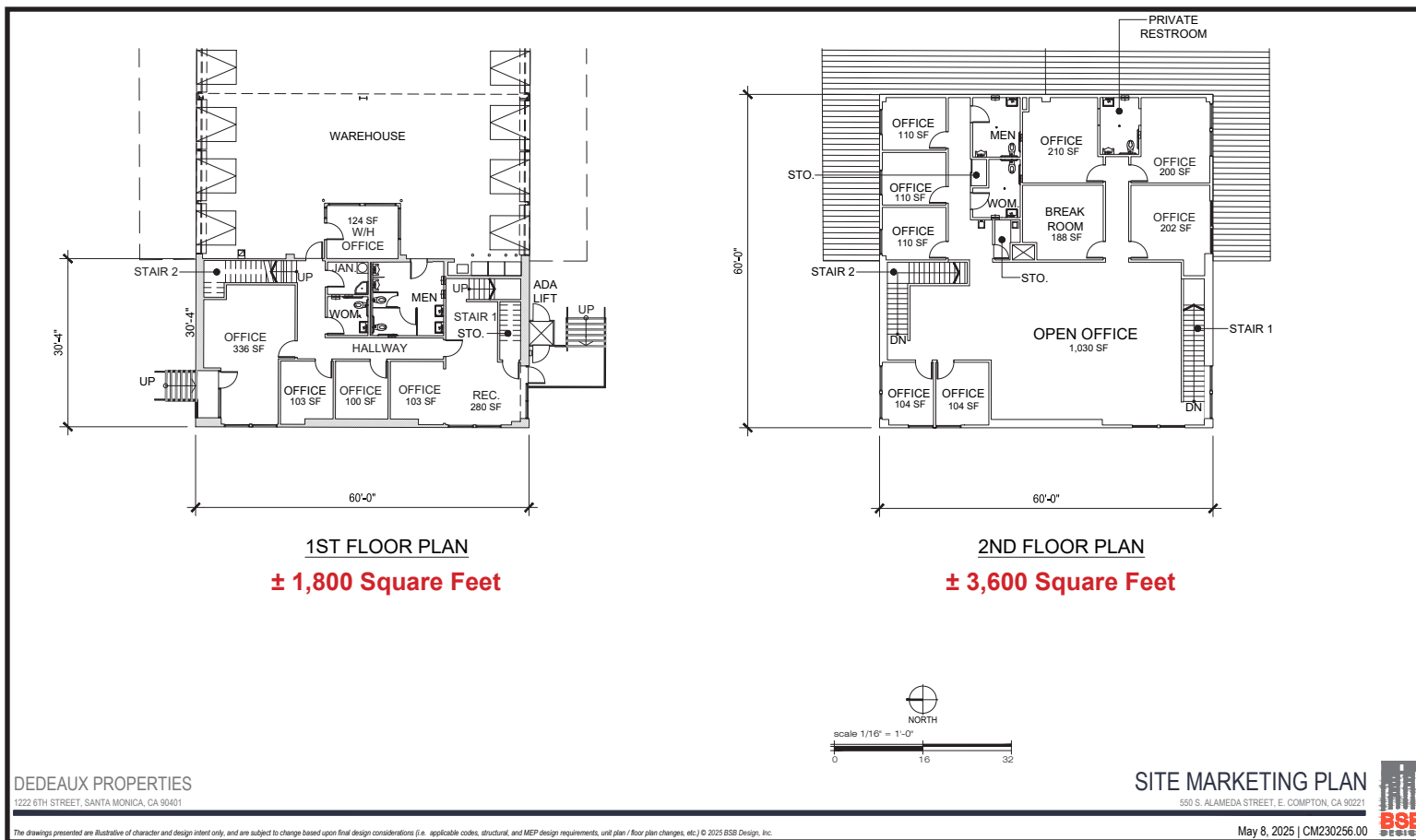
500/550 South Alameda Street • Compton

FOR LEASE

Another Project By:



Office Floor Plans



For more information, please contact:

Steve Sprenger

Vice Chairman

714.264.3993

steve.sprenger@nmrk.com

CA License #01202806

NEWMARK

Rusty Smith

Vice Chairman

562.852.9599

rusty.smith@cushwake.com

CA License #01762370



Kelly Johnson

Director

310.347.8979

kelly.johnson@cushwake.com

CA License #01242823

The information contained herein was obtained from sources believed reliable; however, NEWMARK/Cushman & Wakefield makes no guarantees, warranties, or representations as to the completeness or accuracy thereof. The presentation of this property is submitted subject to errors, omissions, change of price or conditions prior to sale or lease, or withdrawal without notice.

NEWMARK 18401 Von Karman Avenue, Suite 150, Irvine, California 92612 • Tel: 949.608.2000 • Corporate RE#01355491
Cushman & Wakefield 3760 Kilroy Airport Way, Suite 690, Long Beach, CA 90806

SOUTH BAY TRANSLOAD CENTER

500/550 South Alameda Street • Compton

FOR LEASE

Another Project By:



DEDEAUX
PROPERTIES

Locator Map



For more information, please contact:

Steve Sprenger

Vice Chairman

714.264.3993

steve.sprenger@nmrk.com

CA License #01202806

Rusty Smith

Vice Chairman

562.852.9599

rusty.smith@cushwake.com

CA License #01762370

Kelly Johnson

Director

310.347.8979

kelly.johnson@cushwake.com

CA License #01242823

NEWMARK



**CUSHMAN &
WAKEFIELD**

SOUTH BAY TRANSLOAD CENTER

500/550 South Alameda Street • Compton

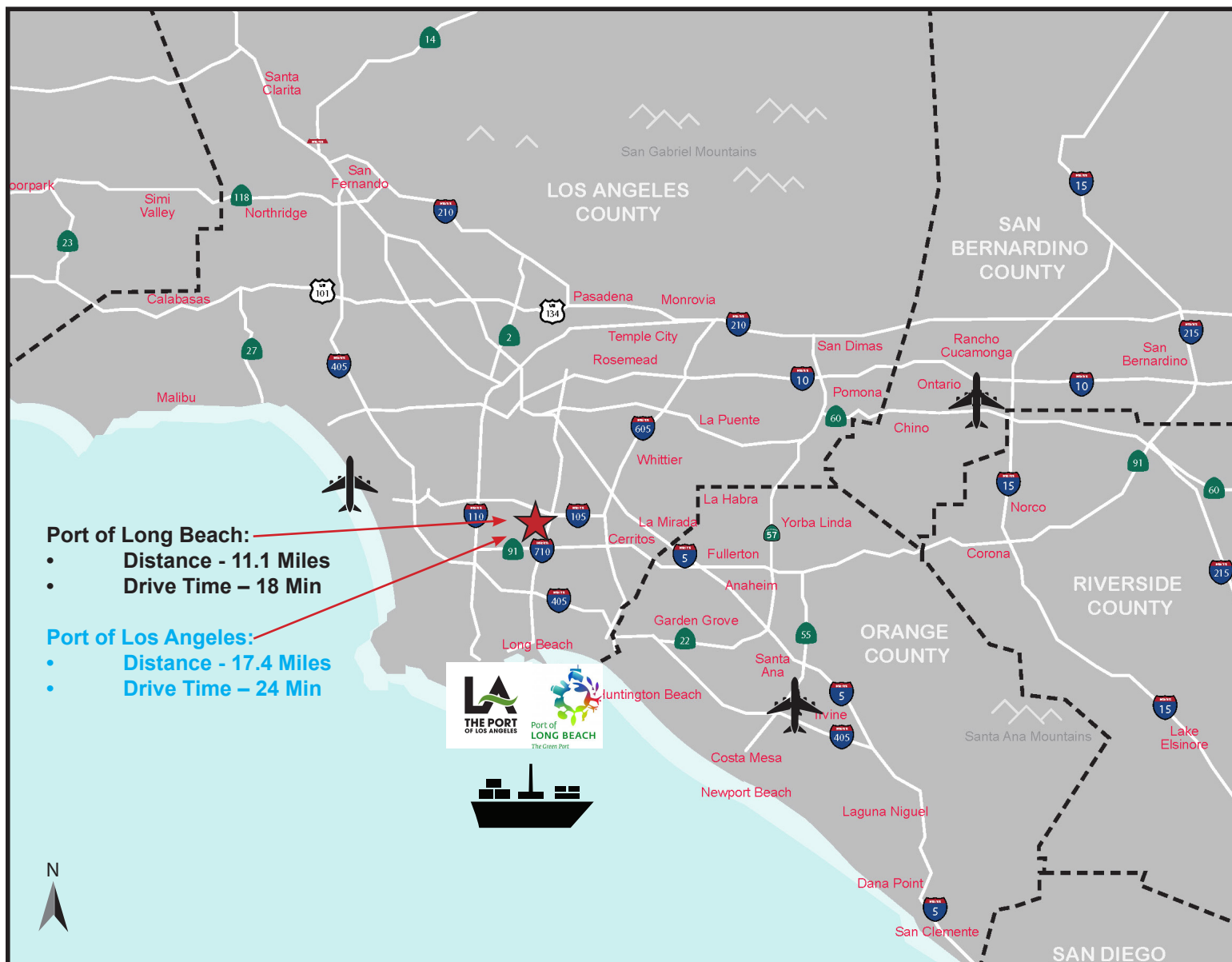
FOR LEASE

Another Project By:



DEDEAUX
PROPERTIES

Regional Map



Port of Long Beach:

- Distance - 11.1 Miles
- Drive Time - 18 Min

Port of Los Angeles:

- Distance - 17.4 Miles
- Drive Time - 24 Min



For more information, please contact:

Steve Sprenger

Vice Chairman

714.264.3993

steve.sprenger@nmrk.com

CA License #01202806

Rusty Smith

Vice Chairman

562.852.9599

rusty.smith@cushwake.com

CA License #01762370

Kelly Johnson

Director

310.347.8979

kelly.johnson@cushwake.com

CA License #01242823

NEWMARK

